

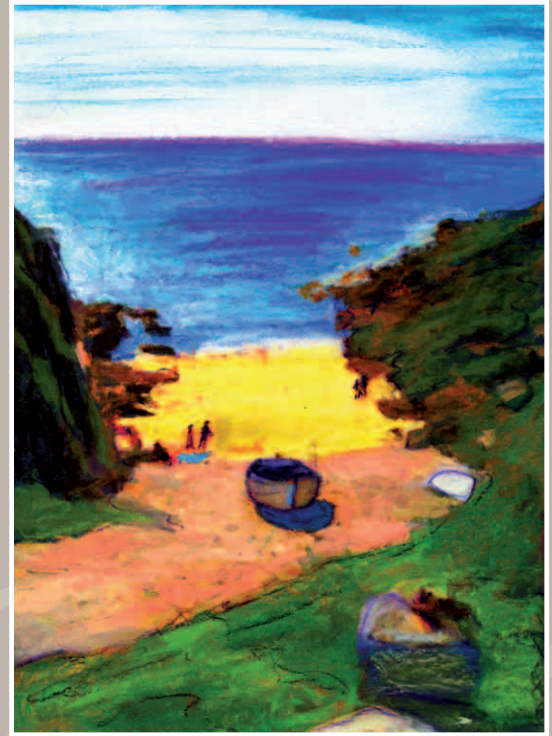
# CUMBRIA VERSUS CORNWALL

two fantastic locations • one artist:

## NELSONN



osprey over catbells



porthgwarra beach



derwentwater



nr. lands end

NELSONN  
at

Gallery 26 at 27  
27 Station Street  
Keswick  
Cumbria  
CA12 5HH  
01768 772090





blencathra & the stone circle



porthcurno beach



cornish coast



ashness bridge

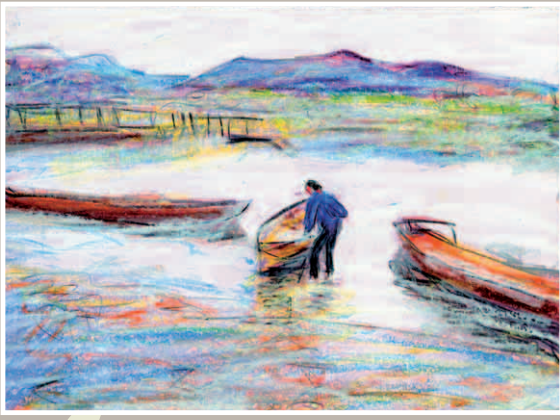


first snow over keswick



cornish coastal path

The **cumbria versus cornwall** series are the results of the fascination by the artist nelson and st ives in cornwall, nelson finds the contrast between sea and coast & lakes and mountains he is unable to do so, stating that for him both have unique and dramatic scenery and an un



boats on derwentwater



grasmere



grisedale tarn



ennerdale from great gable



mousehole



porthmeor beach - st ives



boats in st ives harbour



logan rock

sea & coast v mountains & lakes

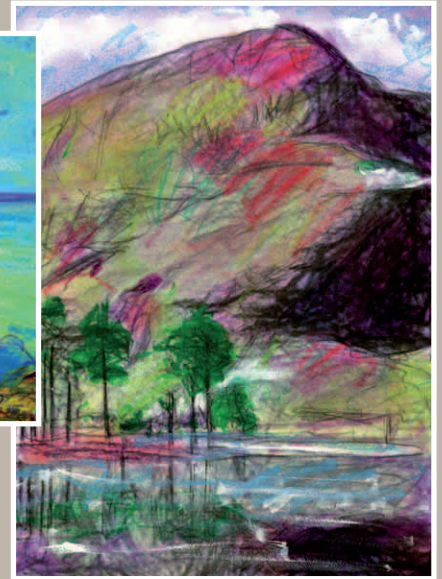
nn with these two english counties. working from his studies in keswick in the lake district  
ountains a major source of artistic inspiration. ask him to name his favourite location and  
n rivalled beauty all of their own; and this series of artwork certainly confirms those sentiments.



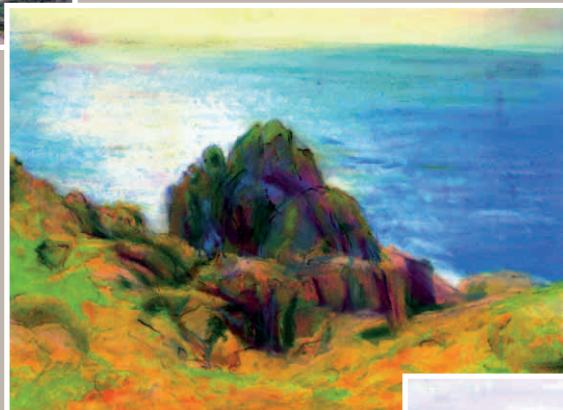
grasmere church



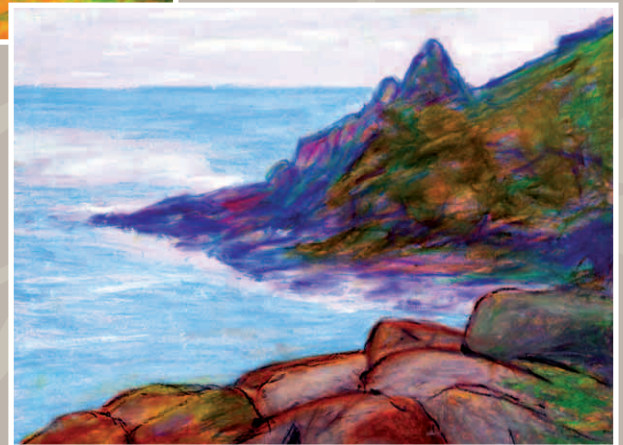
st ives bay



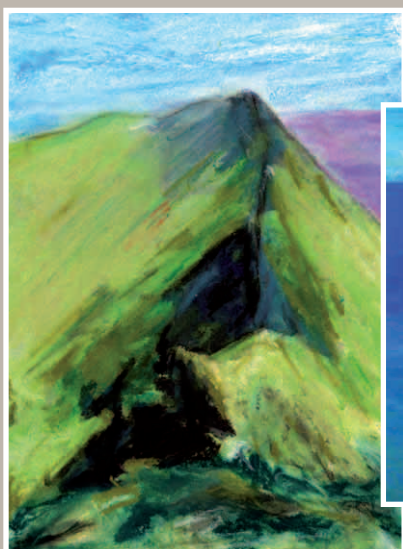
buttermere & high crag



coastal rock formations



gwenap head



striding edge



porthchapel beach



saddleback & blencathra

Gallery 26 at 27 presents these fine signed works on canvas and paper by Nelsonn.

In order to make this series both affordable

yet highly collectable they have been produced in very limited numbers. Available as a full unframed collector's set or individually fully framed. For more information, please do not hesitate to contact the gallery, or visit the website: [www.nelsonn.com](http://www.nelsonn.com)

NELSONN